

ATV TRACK SYSTEMS

2008-2009 COMPLETE LINE-UP



camoplast





REVOLUTIONIZE THE WAY YOU USE YOUR ALL TERRAIN VEHICLE.

**GO WHERE AND WHEN WHEELED
VEHICLES SIMPLY CAN'T.**

Camoplast ATV Track Systems provide the floatation, the traction, and the safe and easy operation to move your ATV over snow, mud, sand, soggy marsh, and other difficult operating environments where wheeled vehicles simply bog down and get stuck. And they do it with the reliability that will keep them going this year, next year, and many years to come.

**FOR UTILITY OPERATIONS, HUNTING,
FISHING, RECREATIONAL OFF-TRAIL
RIDING, FARMING AND RANCHING,
AND MANY OTHER APPLICATIONS.**

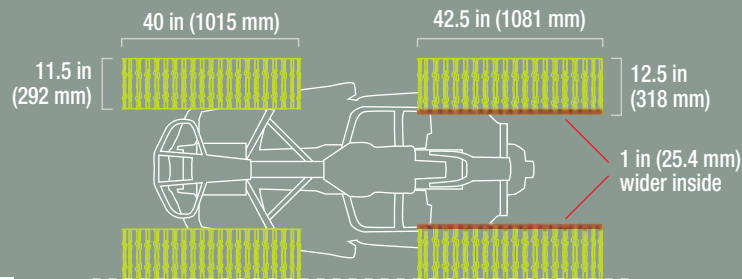
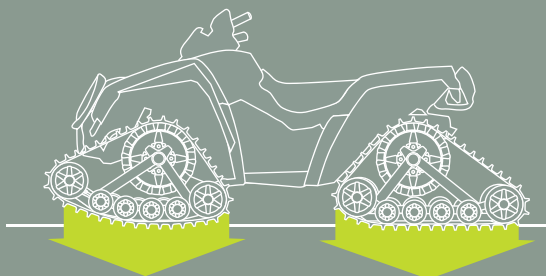


METICULOUS ENGINEERING, RUGGED CONSTRUCTION

REAR FRAME



Industry's best balanced conversion kit
for maximum performance on any surface



DRIVE SPROCKET

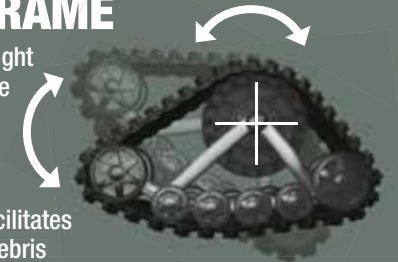
- Gear ratio matched to individual application for superior performance
- Provides maximum possible power and speed by minimizing drive train power loss



15 to 18 teeth

TRACK FRAME

- Tough, light weight steel alloy frame
- Front and rear track frames pivot in tandem
- Open design facilitates evacuation of debris



MOUNTING KIT

- Vehicle-specific for easy installation
- Engineered to prevent vehicle damage and minimize maintenance



TRACK

- Specifically designed for ATV from the ground up
- Pattern and profile optimized for the application
- Proprietary rubber compounds for maximum performance and durability

FLEXTRACK™ Technology

- Advanced design with multiple benefits
- Sloped shoulder design reduces steering effort
- Significant reduction of splatter and snow/mud build up on the vehicle compared to any other track

ATV Stud Ready Track

- Improved traction on icy surfaces
- Pre-marked stud locations allow accurate and quick stud installation (drilling is required for initial installation)
- Available for Tatou 4S only

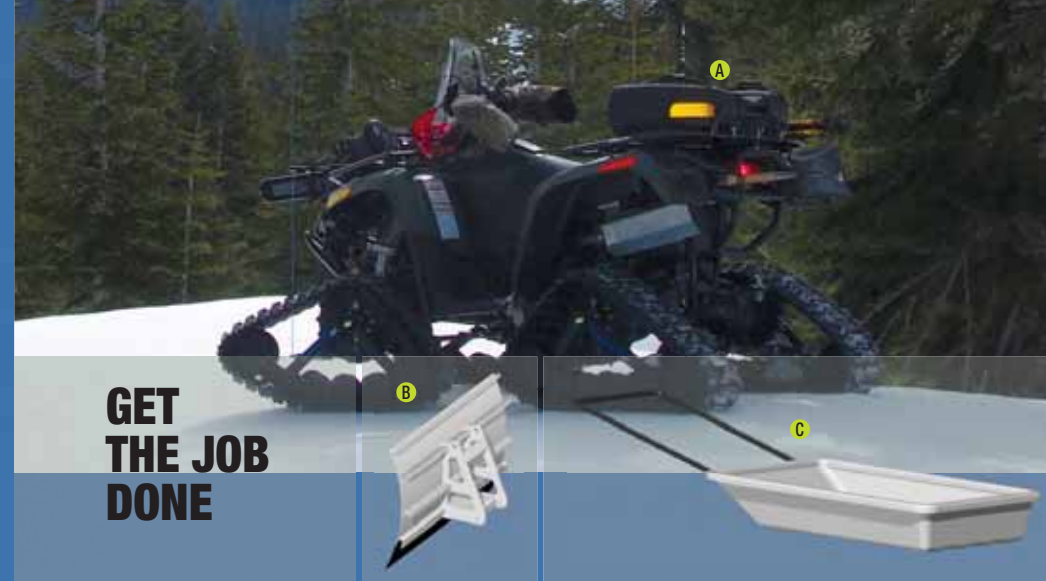


RELIABLE

- Outstanding durability
- Ten years of ATV track system innovation, engineering, and marketing
- Half-century heritage of molded track manufacturing
- Warranty coverage

CAPABLE

- Greatly improved traction
- Exceptional floatation with very low ground pressure
- Matches or exceeds wheeled hauling capability **A C**
- Maximum performance when pulling implements **B**
- Exclusive technologies for superior performance



GET THE JOB DONE



TATOU® 4S ■ ■ ■

THE 4-SEASON SYSTEM WITHOUT COMPROMISE TO WINTER PERFORMANCE

- **New standard equipment rear track**
 - The industry's longest length with 98.5 in (2507 mm)
 - Unique 12.5 inch (318 mm) width
 - Provide the largest footprint for the best floatation in deep and drifted snow
 - 1.188 inch (30 mm) tall track profile provides outstanding traction
- **FLEXTRACK™ in front**
- **Internal drive**
 - Allows true four season operation
 - Maximizes power delivery
- **Industry's best balanced conversion kit for maximum performance on any surface**
- **Best handling**
- **Arched track frame for better handling on hard pack snow and ice**
- **Easy steering on any surface**
 - Elimination of track clips reduces vibration
- **Robust construction with no compromise for 4-season use**
- **Recreation or utility use**
- **Versions for most popular 4WD ATVs 350cc and some UTVs**
- **Available colors: black or silver**

VERSATILE

- Systems for virtually all 4WD ATVs 300cc and up including side-by-sides and 6-wheelers

EASY

- Easy switch from wheels to track systems
- Easy maintenance

SAFE

- Greater vehicle stability
- Remarkable operational control





TATOU® UTV ■ ■ ■

SNOW SYSTEM FOR SIDE-BY-SIDES

- Snow only
- Large footprint (2400 square inches / 1.55 square meters) for maximum floatation and best deep snow performance
- Double front and rear idlers for added track support
- Available color: silver



TATOU® ORIGINAL ■ ■

THE INDUSTRY PIONEER

- Snow only
- Utility and short distance use
- ATVs 300cc and up from 1980s forward
- Available color: silver



DOUBLE-WHEEL OPTION (HW)



- Heavy duty double wheel option for hard work
- Provides better track support and longer life
- Reduces stress on ATV
- Available for Tatou Original only

TATOU® 6X6 ■ ■ ■

SNOW SYSTEM FOR SIX WHEELERS

- Snow only
- Patented design delivers power through all six wheels
- Available color: silver

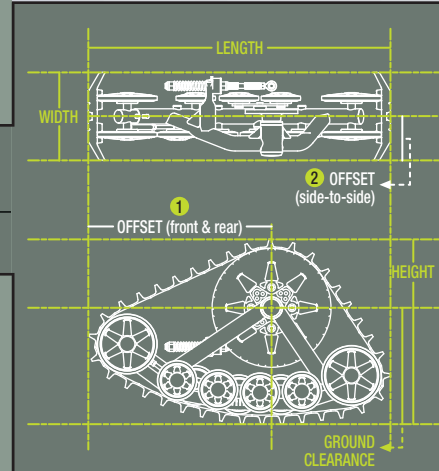


LEGEND

- | | | |
|--|--|---|
| ■ RECREATIONAL <ul style="list-style-type: none"> • Trails • Outings • Excursions • And more | ■ SPORTSMAN <ul style="list-style-type: none"> • Hunting & fishing • Ranching, farming & odd jobs • Reaching inaccessible areas • And more | ■ UTILITY <ul style="list-style-type: none"> • Hauling & job site transportation • Mining & construction • Ski hills & resorts • And more |
|--|--|---|



UNDERCARRIAGE	TATOU 4S	TATOU UTV	TATOU 6X6	TATOU ORIGINAL*
WEIGHT	71 lbs (30 kg)	Front: 77 lbs (35 kg) Rear: 105 lbs (47 kg)	Front: 73 lbs (33 kg) Rear: 147 lbs (73.5 kg)	73 lbs (33 kg)
OFFSET (FRONT & REAR) 1	Front: 24 in (611 mm) Rear: 27 in (662 mm) Total: 51 in (1298 mm)	Front: 24 in (611 mm) Rear: 36 in (916 mm) Total: 60 in (1527 mm)	Front: 24 in (611 mm) Rear: 23 in (585 mm) Total: 47 in (1196 mm)	Front: 24 in (611 mm) Rear: 24 in (611 mm) Total: 48 in (1222 mm)
OFFSET (SIDE-TO-SIDE) 2	6 in (153 mm)	Front: 6 in (153 mm) Rear: 7 in (178 mm)	7 in (178 mm)	6 in (153 mm)
LENGTH	Front: 40 in (1015 mm) Rear: 42.5 in (1081 mm)	Front: 40 in (1015 mm) Rear: 52 in (1320 mm)	Front: 40 in (1015 mm) Rear: 67.5 in (1715 mm)	40 in (1015 mm)
HEIGHT	22 in (560 mm)	22 in (560 mm)	22 in (560 mm)	22 in (560 mm)
MOUNTING WEIGHT	Approx. 6.25 lbs (2.75kg)	Approx. 6.25 lbs (2.75kg)	Approx. 7.5 lbs (3.3 kg)	Approx. 6.25 lbs (2.75kg)
RUBBER TRACK				
WIDTH	Front: 11.5 in (292 mm) Rear: 12.5 in (318 mm)	Front: 11.5 in (292 mm) Rear: 13.5 in (343 mm)	Front: 11.5 in (292 mm) Rear: 13.5 in (343 mm)	Front: 11.5 in (292 mm)
LENGTH	Front: 93.4 in (2377 mm) Rear: 98.5 in (2507 mm)	Front: 93.4 in (2377 mm) Rear: 116 in (2952 mm)	Front: 93.4 in (2377 mm) Rear: 144 in (3665 mm)	Front: 93.4 in (2377 mm) Rear: 93.4 in (2377 mm)
LUG HEIGHT	Front: 0.875 in (22 mm) Rear: 1.188 in (30 mm)	Front: 1 in (25 mm) Rear: 0.75 in (19 mm)	Front: 1 in (25 mm) Rear: 1.5 in (38 mm)	Front: 0.875 in (22 mm) Rear: 1 in (25 mm)
PERFORMANCE				
SQUARED GROUND SURFACE	2000 in (1.30 m)	2400 in (1.55 m)	2600 in (1.67 m)	1850 in (1.19 m)
GROUND CLEARANCE	Increased by 3 in (76 mm)	Increased by 3 in (76 mm)	Increased by 3 in (76 mm)	Increased by 3 in (76 mm)
MAINTAINED SPEED	65%	55%	45%	55%
CONSTRUCTION				
DRIVE TYPE	Internal drive	External single drive	Front: External single drive Rear: Double external drive	External single drive
RUBBER TRACK	Front: Flex Rear: Flat	Front: Flat Rear: Flat	Front: Flex Rear: Flat	Front: Flex Rear: Flat
FRAME	Carbon steel	Carbon steel	Carbon steel	Carbon steel
SPROCKET	16 to 18 teeth	15 to 18 teeth	16 to 17 teeth	15 to 18 teeth
INSTALLATION TIME	1.5 h	2 h	2 h	2 h
SUBSEQUENT	30 min	45 min -1 h	45 min -1 h	45 min -1 h



*Possibility to upgrade the Tatou Original with the HW option by adding a double wheels feature
Note: Information might change depending ATVs and models.



CAMOPLAST, THE LEADER IN ATV TRACK SYSTEMS

Camoplast engineers, tests, and markets the world's largest selection of ATV and UTV track conversion systems for utility and recreational users. Our products set the standards for performance. And they are backed by a highly qualified professional team to provide customer service, technical support, and warranty coverage. We know how well these products work because we are ATV enthusiasts and we use our Track Systems on our own personal machines. When you invest in a Camoplast ATV track system, you can be assured that you have the best system available.

USA & CANADA:
866 533-0008

DIRECT:
819 533-0008

atvtracksystems@camoplast.com

More product information,
photos, videos, and the latest
updates are available at
camoplast.com

Make it happen